

google stock



Input interpretation:

**Google** (GOOG)

Latest trade:

**\$ 390.00** (Lt 999.50) (GOOG | NASDAQ | Friday 4:00 pm EDT | 63 hours ago)

Fundamentals and financials:

market cap	\$ 123.2 billion
revenue	\$ 22.12 billion
employees	20 222
revenue / employee	\$ 1.24 million
net income	\$ 4.343 billion
shares outstanding	315.9 million
annual earnings / share	\$ 13.29
P/E ratio	29.35
annual dividends / share	
dividend yield	

(based on trailing 12-month totals, last close price and annual employees)

# Wolfram|Alpha: google stock

Recent returns:

day	month	YTD	year	5 year
+0.65%	+2.77%	+26.77%	-32.87%	

Price history:



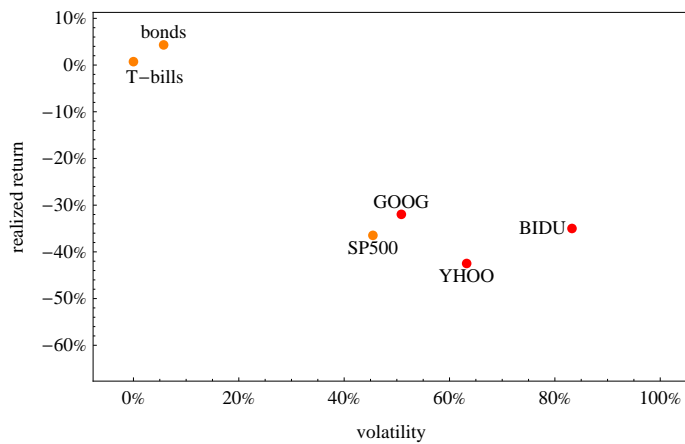
minimum: \$257.44  
Monday, Nov 24, 2008

average: \$399.99

maximum: \$586.30  
Thursday, Jun 5, 2008

Performance comparisons:

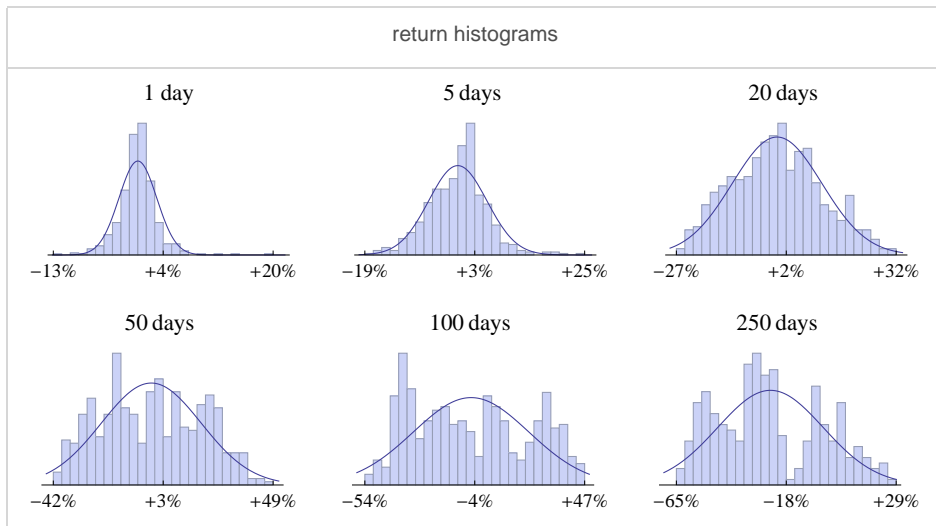
	average daily return	daily volatility	annual return	annual volatility
GOOG	-0.153%	3.21%	-31.97%	50.86%
YHOO	-0.220%	3.99%	-42.49%	63.25%
BIDU	-0.171%	5.25%	-34.99%	83.25%
SP500	-0.181%	2.87%	-36.47%	45.46%
bonds	+0.017%	0.36%	+4.31%	5.73%
T- bills	+0.003%	0.00%	+0.73%	0.00%



Correlation matrix:

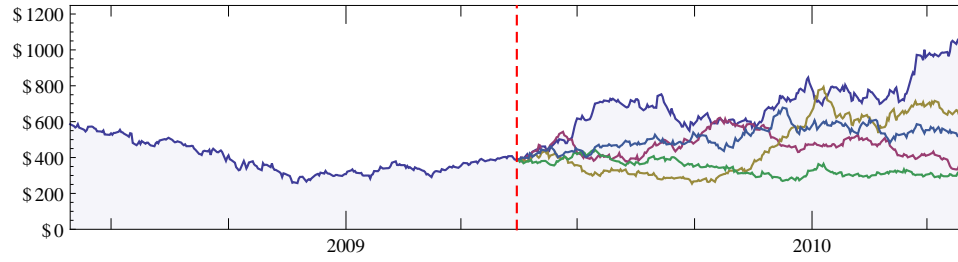
	GOOG	YHOO	BIDU	SP500
GOOG	1	0.336	0.59	0.677
YHOO	0.336	1	0.313	0.494
BIDU	0.59	0.313	1	0.529
SP500	0.677	0.494	0.529	1

Daily return analysis:



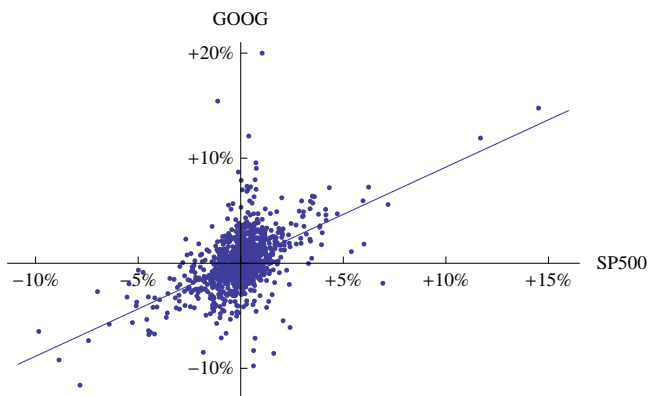
# Wolfram|Alpha: google stock

Projections:



(simulated log-normal random walks based on historical parameters)

Daily returns versus S&P 500:



alpha	45.68%
beta	0.900
R <sup>2</sup>	0.287

Company information:

company name	Google, Inc.
sector	internet information providers
location	Mountain View, California, United States
website	www.google.com